

2013年7月

## シアル酸含有糖鎖及びその保護体価格表

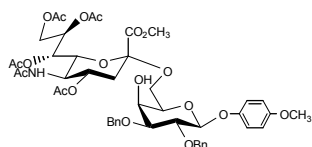
長良サイエンス株式会社

〒501-1121 岐阜市古市場 840

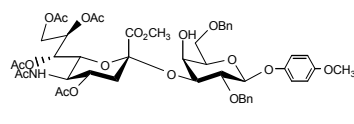
Tel 058-234-4257, Fax 058-234-4724

E-mail:nagara@nsgifu.jp, http://www.nsgifu.jp

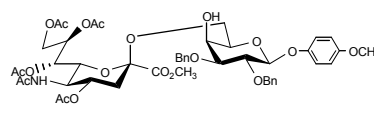
| Code No.                         | Storage Conditions | Product Name · Purity · Molecular Formula = Molecular Weight ·<br>[ CAS Registry Number ]   | Quantity · Price (JPY)                     |
|----------------------------------|--------------------|---|--|
| SG001010<br>SG001100<br>SG001001 | 2-10°C             | <b>Protected 6'-α-Sialylgalactose; Protected NeuAc α(2→6)-D-Gal</b> ≥98% (TLC)<br>C <sub>47</sub> H <sub>57</sub> NO <sub>19</sub> =939.95                        | 10mg 20,000<br>100mg 90,000<br>1g 630,000  |
| SG002010<br>SG002100<br>SG002001 | 2-10°C             | <b>Protected 3'-α-Sialylgalactose; Protected NeuAc α(2→3)-D-Gal</b> ≥98% (TLC)<br>C <sub>47</sub> H <sub>57</sub> NO <sub>19</sub> =939.95                        | 10mg 20,000<br>100mg 90,000<br>1g 630,000  |
| SG003010<br>SG003100             | 2-10°C             | <b>Protected 6'-β-Sialylgalactose; Protected NeuAc β(2→6)-D-Gal</b> ≥98% (TLC)<br>C <sub>47</sub> H <sub>57</sub> NO <sub>19</sub> =939.95                        | 10mg 30,000<br>100mg 180,000               |
| SL001010<br>SL001100<br>SL001001 | 2-10°C             | <b>Protected 6'-α-Sialyllactose; Protected NeuAc α(2→6)-D-Gal-β(1→4)-D-Glc</b> ≥98% (TLC)<br>C <sub>74</sub> H <sub>85</sub> NO <sub>24</sub> =1372.46            | 10mg 28,000<br>100mg 140,000<br>1g 980,000 |
| SL002010<br>SL002100<br>SL002001 | 2-10°C             | <b>Protected 3'-α-Sialyllactose; Protected NeuAc α(2→3)-D-Gal-β(1→4)-D-Glc</b> ≥98% (TLC)<br>C <sub>74</sub> H <sub>85</sub> NO <sub>24</sub> =1372.46            | 10mg 28,000<br>100mg 140,000<br>1g 980,000 |
| SL003010<br>SL003100             | 2-10°C             | <b>Protected 6'-β-Sialyllactose; Protected NeuAc β(2→6)-D-Gal-β(1→4)-D-Glc</b> ≥98%(TLC)<br>C <sub>74</sub> H <sub>85</sub> NO <sub>24</sub> =1372.46             | 10mg 45,000<br>100mg 270,000               |
| SL004001<br>SL004005             | -20°C              | <b>3'-Sialyllactose sodium salt, from human milk</b> ≥99%(TLC)<br>C <sub>23</sub> H <sub>38</sub> NO <sub>19</sub> Na=655.53 [128596-80-5, Component: 35890-38-1] | 1mg 30,000<br>5mg 120,000                  |
| SL005001<br>SL005005             | -20°C              | <b>6'-Sialyllactose sodium salt, from human milk</b> ≥99%(TLC)<br>C <sub>23</sub> H <sub>38</sub> NO <sub>19</sub> Na=655.53 [157574-76-0, Component: 35890-39-2] | 1mg 24,000<br>5mg 96,000                   |
| SL006010<br>SL006050             | -20°C              | <b>3'-Sialyllactose sodium salt (synthetic)</b> ≥99%(TLC)<br>C <sub>23</sub> H <sub>38</sub> NO <sub>19</sub> Na=655.53 [128596-80-5, Component: 35890-38-1]      | 10mg 10,000<br>50mg 20,000                 |
| SL007010<br>SL007050             | -20°C              | <b>6'-Sialyllactose sodium salt (synthetic)</b> ≥99%(TLC)<br>C <sub>23</sub> H <sub>38</sub> NO <sub>19</sub> Na=655.53 [157574-76-0, Component: 35890-39-2]      | 10mg 10,000<br>50mg 20,000                 |
|                                  | -20°C              | <b>Disialyllactose sodium salt</b> ≥99%(TLC)<br>C <sub>34</sub> H <sub>54</sub> N <sub>2</sub> O <sub>27</sub> Na <sub>2</sub> =968.77 [ ]                        | 5mg 30,000<br>10mg 54,000                  |



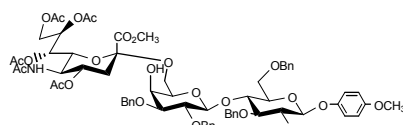
Protected 6'-α-Sialylgalactose



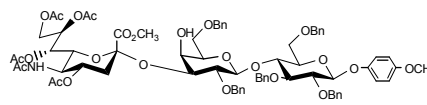
Protected 3'-α-Sialylgalactose



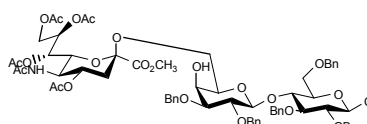
Protected 6'-β-Sialylgalactose



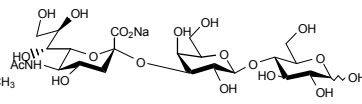
Protected 6'-α-Sialyllactose



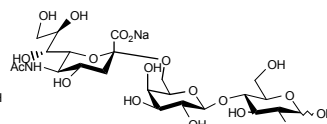
Protected 3'-α-Sialyllactose



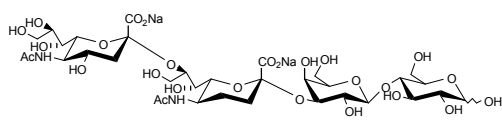
Protected 6'-β-Sialyllactose



3'-Sialyllactose sodium salt



6'-Sialyllactose sodium salt



Disialyllactose sodium salt