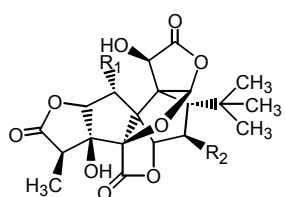


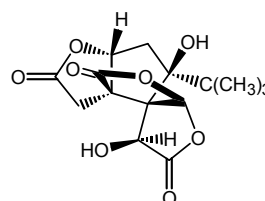
## イチョウ成分価格表

長良サイエンス株式会社  
〒501-1121 岐阜市古市場 840  
Tel 058-234-4257, Fax 058-234-4724  
E-mail:nagara@nsgifu.jp, http://www.nsgifu.jp

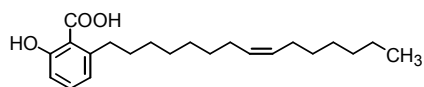
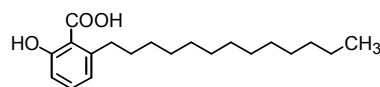
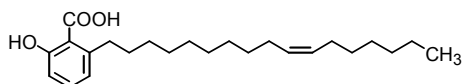
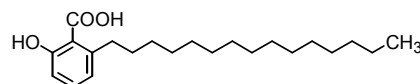
Code No.	Storage Conditions	Product Name · Purity · Molecular Formula = Molecular Weight · [ CAS Registry Number ]	Quantity · Price (JPY)
NH050102 NH050103	2-10 °C	<b>Ginkgolide A</b> $\geq 98\%$ (HPLC) $C_{26}H_{24}O_9 = 408.40$ [15291-75-5]	10mg 4,000 100mg 28,000
NH050202 NH050203	2-10 °C	<b>Ginkgolide B</b> $\geq 98\%$ (HPLC) $C_{26}H_{24}O_{10} = 424.40$ [15291-77-7]	10mg 8,000 100mg 56,000
NH050302 NH050303	2-10 °C	<b>Ginkgolide C</b> $\geq 98\%$ (HPLC) $C_{26}H_{24}O_{11} = 440.40$ [15291-76-6]	10mg 8,000 100mg 56,000
NH050402 NH050403	2-10 °C	<b>(-)-Bilobalide</b> $\geq 98\%$ (HPLC) $C_{15}H_{18}O_8 = 326.30$ [33570-04-6]	10mg 12,000 100mg 84,000
NH052102	2-10 °C	<b>Ginkgolic acid 15:1</b> [Anacardic acid 15:1, Ginkgolic acid, Ginkgolic acid I] $\geq 99\%$ (HPLC) $C_{22}H_{34}O_3 = 346.50$ [22910-60-7]	10mg 29,800
NH052202	2-10 °C	<b>Ginkgolic acid 17:1</b> [Anacardic acid 17:1, Ginkgolic acid II] $\geq 99\%$ (HPLC) $C_{24}H_{38}O_3 = 374.56$ [111047-30-4]	10mg 29,800
NH052302	2-10 °C	<b>Ginkgolic acid 13:0</b> [Anacardic acid 13:0] $\geq 99\%$ (HPLC) $C_{20}H_{32}O_3 = 320.47$ [20261-38-5]	5mg 29,800
NH052402 NH052403	2-10 °C	<b>Ginkgolic acid 15:0</b> [Anacardic acid 15:0] $\geq 99\%$ (HPLC) $C_{22}H_{36}O_3 = 348.52$ [16611-84-0]	10mg 18,000 100mg 126,000
NH053102	2-10 °C	<b>Ginkgolic acid 15:1 + Ginkgolic acid 13:0 (4:1)</b> [Anacardic acid 15:1 + Anacardic acid 13:0] $\geq 99\%$ (HPLC)	10mg 24,000
NH053202	2-10 °C	<b>Ginkgolic acid 17:1 + Ginkgolic acid 15:0 (6:1)</b> [Anacardic acid 17:1 + Anacardic acid 15:0] $\geq 99\%$ (HPLC)	10mg 24,000
NH053303 NH053304	2-10 °C	<b>Ginkgolic acids [Anacardic acids]</b> { Ginkgolic acid 13:0, Ginkgolic acid 15:1, Ginkgolic acid 17:1 etc. }, from Ginkgo biloba $\geq$ Total 95% (HPLC)	100mg 15,000 1g 30,000



Ginkgolide A  $R_1=R_2=H$   
Ginkgolide B  $R_1=OH, R_2=H$   
Ginkgolide C  $R_1=R_2=OH$



(-)-Bilobalide

Ginkgolic acid 15:1  
[Anacardic acid 15:1]Ginkgolic acid 13:0  
[Anacardic acid 13:0]Ginkgolic acid 17:1  
[Anacardic acid 17:1]Ginkgolic acid 15:0  
[Anacardic acid 15:0]