

茶メチル化カテキン

長良サイエンス株式会社

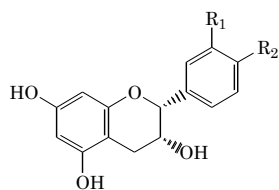
〒501-1121 岐阜市古市場 840

TEL 058-234-4257, Fax 058-234-4724

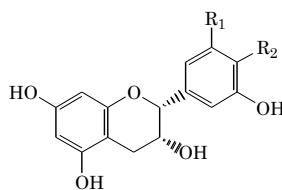
E-mail : nagara@nsgifu.jp, http : //www.nsgifu.jp

*100mg, 1g の生産が可能です。ぜひご相談ください。

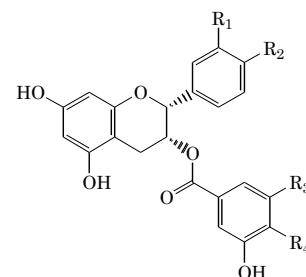
Code No.	Storage Conditions	Product Name · Purity · Molecular Formula = Molecular Weight · [CAS Registry Number]	Quantity · Price (JPY)
NH022101	-20 °C	(-)-Epicatechin-3'-O-methylether [(-)-EC-3'-O-Me] (synthetic) C ₁₆ H ₁₆ O ₆ = 304.29 [-] ≥ 98% (HPLC)	1mg 24,000
NH022201	-20 °C	(-)-Epicatechin-4'-O-methylether [(-)-EC-4'-O-Me] (synthetic) C ₁₆ H ₁₆ O ₆ = 304.29 [-] ≥ 98% (HPLC)	1mg 24,000
NH022301	-20 °C	(-)-Epigallocatechin-3'-O-methylether [(-)-EGC-3'-O-Me] (synthetic) C ₁₆ H ₁₆ O ₇ = 320.29 [-] ≥ 90% (HPLC)	1mg 24,000
NH022401	-20 °C	(-)-Epigallocatechin-4'-O-methylether [(-)-EGC-4'-O-Me] (synthetic) C ₁₆ H ₁₆ O ₇ = 320.29 [17291-05-3] ≥ 95% (HPLC)	1mg 24,000
NH022501	-20 °C	(-)-Epicatechin-3'-O-methylether gallate [(-)-ECg-3'-O-Me] (synthetic) C ₂₃ H ₂₀ O ₁₀ = 456.40 [-] ≥ 98% (HPLC)	1mg 36,000
NH022601	-20 °C	(-)-Epicatechin-4'-O-methylether gallate [(-)-ECg-4'-O-Me] (synthetic) C ₂₃ H ₂₀ O ₁₀ = 456.40 [-] ≥ 98% (HPLC)	1mg 36,000
NH022701	-20 °C	(-)-Epicatechin 3-(3"-O-methyl)gallate [(-)-ECg-3"-O-Me] (synthetic) C ₂₃ H ₂₀ O ₁₀ = 456.40 [83104-86-3] ≥ 98% (HPLC)	1mg 24,000
NH027102	-20 °C	(-)-Epicatechin 3-(3"-O-methyl)gallate [(-)-ECg-3"-O-Me] (natural) C ₂₃ H ₂₀ O ₁₀ = 456.40 [83104-86-3] ≥ 99% (HPLC)	5mg 30,000
NH022801	-20 °C	(-)-Epicatechin 3-(4"-O-methyl)gallate [(-)-ECg-4"-O-Me] (synthetic) C ₂₃ H ₂₀ O ₁₀ = 456.40 [108907-44-4] ≥ 98% (HPLC)	1mg 24,000
NH022901	-20 °C	(-)-Epigallocatechin-3'-O-methylether gallate [(-)-EGCg-3'-O-Me] (synthetic) C ₂₃ H ₂₀ O ₁₁ = 472.40 [298700-56-8] ≥ 98% (HPLC)	1mg 36,000
NH023001	-20 °C	(-)-Epigallocatechin-4'-O-methylether gallate [(-)-EGCg-4'-O-Me] (synthetic) C ₂₃ H ₂₀ O ₁₁ = 472.40 [298700-57-9] ≥ 98% (HPLC)	1mg 36,000
NH027201	-20 °C	(-)-Epigallocatechin 3-(3"-O-methyl)gallate [(-)-EGCg-3"-O-Me] (natural) C ₂₃ H ₂₀ O ₁₁ = 472.40 [83104-87-4] ≥ 99% (HPLC)	2mg 20,000
NH027202	-20 °C	(-)-Epigallocatechin 3-(3"-O-methyl)gallate [(-)-EGCg-3"-O-Me] (natural) C ₂₃ H ₂₀ O ₁₁ = 472.40 [83104-87-4] ≥ 99% (HPLC)	10mg 30,000
NH023201	-20 °C	(-)-Epigallocatechin 3-(4"-O-methyl)gallate [(-)-EGCg-4"-O-Me] (synthetic) C ₂₃ H ₂₀ O ₁₁ = 472.40 [224434-07-5] ≥ 98% (HPLC)	1mg 24,000
NH023301	-20 °C	(-)-Gallocatechin 3-(3"-O-methyl)gallate [(-)-GCg-3"-O-Me] (synthetic) C ₂₃ H ₂₀ O ₁₁ = 472.40 [264147-80-0] ≥ 98% (HPLC)	1mg 100,000



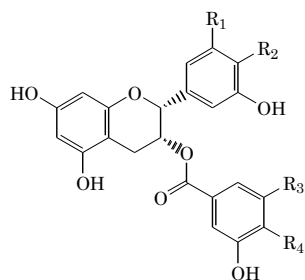
(-)-Epicatechin R₁=R₂=OH
 (-)-Epicatechin-3'-O-methylether R₁=OCH₃, R₂=OH
 (-)-Epicatechin-4'-O-methylether R₁=OH, R₂=OCH₃



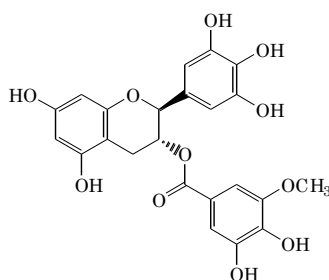
(-)-Epigallocatechin R₁=R₂=OH
 (-)-Epigallocatechin-3'-O-methylether R₁=OCH₃, R₂=OH
 (-)-Epigallocatechin-4'-O-methylether R₁=OH, R₂=OCH₃



(-)-Epicatechin gallate R₁=R₂=R₃=R₄=OH
 (-)-Epicatechin-3'-O-methylether gallate R₁=OCH₃, R₂=R₃=R₄=OH
 (-)-Epicatechin-4'-O-methylether gallate R₂=OCH₃, R₁=R₃=R₄=OH
 (-)-Epicatechin 3-(3"-O-methyl)gallate R₃=OCH₃, R₁=R₂=R₄=OH
 (-)-Epicatechin 3-(4"-O-methyl)gallate R₄=OCH₃, R₁=R₂=R₃=OH



(-)-Epigallocatechin gallate R₁=R₂=R₃=R₄=OH
 (-)-Epigallocatechin-3'-O-methylether gallate R₁=OCH₃, R₂=R₃=R₄=OH
 (-)-Epigallocatechin-4'-O-methylether gallate R₂=OCH₃, R₁=R₃=R₄=OH
 (-)-Epigallocatechin 3-(3"-O-methyl)gallate R₃=OCH₃, R₁=R₂=R₄=OH
 (-)-Epigallocatechin 3-(4"-O-methyl)gallate R₄=OCH₃, R₁=R₂=R₃=OH



(-)-Gallocatechin 3-(3"-O-methyl)gallate