

## 茶カテキン類、ストリクチニン

長良サイエンス株式会社

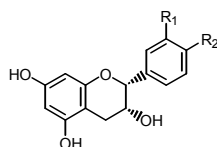
〒501-1121 岐阜市古市場 840

Tel 058-234-4257, Fax 058-234-4724

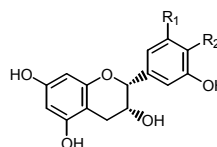
E-mail:nagara@nsgifu.jp, http://www.nsgifu.jp

\*大量生産が可能です。ぜひご相談ください。

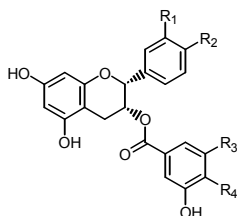
コード番号	保存方法	製品名・含量(HPLC)・分子式=分子量・[CAS番号]	定価(円、税別)
NH020102 NH020103	2-10℃	<b>(-)-Epicatechin</b> [(-)-EC] $\geq 99\%$ (HPLC) C <sub>15</sub> H <sub>14</sub> O <sub>6</sub> = 290.27 [490-46-0]	10mg 8,000 100mg 44,000
NH020202 NH020203	2-10℃	<b>(-)-Epigallocatechin</b> [(-)-EGC] $\geq 99\%$ (HPLC) C <sub>15</sub> H <sub>14</sub> O <sub>7</sub> = 306.27 [970-74-1]	10mg 12,000 100mg 66,000
NH020302 NH020303	2-10℃	<b>(-)-Epicatechin gallate</b> [(-)-ECg] $\geq 99\%$ (HPLC) C <sub>22</sub> H <sub>18</sub> O <sub>10</sub> = 442.37 [1257-08-5]	10mg 12,000 100mg 52,000
NH020403	2-10℃	<b>(-)-Epigallocatechin gallate</b> [(-)-EGCg] $\geq 98\%$ (HPLC) C <sub>22</sub> H <sub>18</sub> O <sub>11</sub> = 458.37 [989-51-5]	100mg 12,000
NH020602 NH020603	2-10℃	<b>(-)-Epigallocatechin gallate</b> [(-)-EGCg] $\geq 99\%$ (HPLC) C <sub>22</sub> H <sub>18</sub> O <sub>11</sub> = 458.37 [989-51-5]	20mg 12,000 100mg 30,000
NH020502	2-10℃	<b>(+)-Catechin hydrate</b> [(+)-C] $\geq 98\%$ (HPLC) C <sub>15</sub> H <sub>14</sub> O <sub>6</sub> · H <sub>2</sub> O = 308.28 [88191-48-4]	10mg 5,000
NH021102	2-10℃	<b>(-)-Catechin</b> [(-)-C] $\geq 98\%$ (HPLC) C <sub>15</sub> H <sub>14</sub> O <sub>6</sub> = 290.27 [18829-70-4]	10mg 23,000
NH021202	2-10℃	<b>(-)-Gallocatechin</b> [(-)-GC] $\geq 98\%$ (HPLC) C <sub>15</sub> H <sub>14</sub> O <sub>7</sub> = 306.27 [3371-27-5]	10mg 34,000
NH021302	2-10℃	<b>(-)-Catechin gallate</b> [(-)-Cg] $\geq 98\%$ (HPLC) C <sub>22</sub> H <sub>18</sub> O <sub>10</sub> = 442.37 [130405-40-2]	10mg 34,000
NH021402	2-10℃	<b>(-)-Gallocatechin gallate</b> [(-)-GCg] $\geq 98\%$ (HPLC) C <sub>22</sub> H <sub>18</sub> O <sub>11</sub> = 458.37 [4233-96-9]	10mg 23,000
NH021502	2-10℃	<b>(+)-Epicatechin</b> [(+)-EC] $\geq 98\%$ (HPLC) C <sub>15</sub> H <sub>14</sub> O <sub>6</sub> = 290.27 [35323-91-2]	10mg 22,000
NH025104	2-10℃	<b>Catechin Mixture</b> { (-)-Epicatechin, (-)-Epigallocatechin, (-)-Epicatechin gallate, (-)-Epigallocatechin gallate }, from Green tea $\geq$ Total 85% (HPLC)	1g 19,800
NH026102	2-10℃	<b>Strictinin</b> $\geq 98\%$ (HPLC) C <sub>27</sub> H <sub>22</sub> O <sub>18</sub> = 634.45 [517-46-4]	5mg 30,000



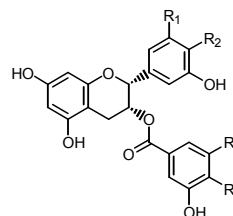
(-)-Epicatechin R<sub>1</sub>=R<sub>2</sub>=OH  
 (-)-Epicatechin-3'-O-methylether R<sub>1</sub>=OCH<sub>3</sub>, R<sub>2</sub>=OH  
 (-)-Epicatechin-4'-O-methylether R<sub>1</sub>=OH, R<sub>2</sub>=OCH<sub>3</sub>



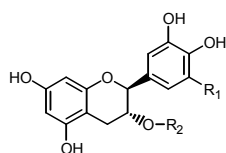
(-)-Epigallocatechin R<sub>1</sub>=R<sub>2</sub>=OH  
 (-)-Epigallocatechin-3'-O-methylether R<sub>1</sub>=OCH<sub>3</sub>, R<sub>2</sub>=OH  
 (-)-Epigallocatechin-4'-O-methylether R<sub>1</sub>=OH, R<sub>2</sub>=OCH<sub>3</sub>



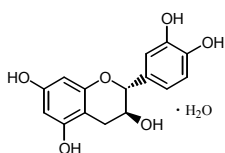
(-)-Epicatechin gallate R<sub>1</sub>=R<sub>2</sub>=R<sub>3</sub>=R<sub>4</sub>=OH  
 (-)-Epicatechin-3'-O-methylether gallate R<sub>1</sub>=OCH<sub>3</sub>, R<sub>2</sub>=R<sub>3</sub>=R<sub>4</sub>=OH  
 (-)-Epicatechin-4'-O-methylether gallate R<sub>2</sub>=OCH<sub>3</sub>, R<sub>1</sub>=R<sub>3</sub>=R<sub>4</sub>=OH  
 (-)-Epicatechin 3-(3''-O-methyl) gallate R<sub>3</sub>=OCH<sub>3</sub>, R<sub>1</sub>=R<sub>2</sub>=R<sub>4</sub>=OH  
 (-)-Epicatechin 3-(4''-O-methyl) gallate R<sub>4</sub>=OCH<sub>3</sub>, R<sub>1</sub>=R<sub>2</sub>=R<sub>3</sub>=OH



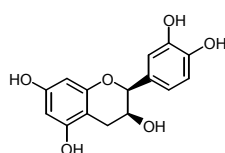
(-)-Epigallocatechin gallate R<sub>1</sub>=R<sub>2</sub>=R<sub>3</sub>=R<sub>4</sub>=OH  
 (-)-Epigallocatechin-3'-O-methylether gallate R<sub>1</sub>=OCH<sub>3</sub>, R<sub>2</sub>=R<sub>3</sub>=R<sub>4</sub>=OH  
 (-)-Epigallocatechin-4'-O-methylether gallate R<sub>2</sub>=OCH<sub>3</sub>, R<sub>1</sub>=R<sub>3</sub>=R<sub>4</sub>=OH  
 (-)-Epigallocatechin 3-(3''-O-methyl) gallate R<sub>3</sub>=OCH<sub>3</sub>, R<sub>1</sub>=R<sub>2</sub>=R<sub>4</sub>=OH  
 (-)-Epigallocatechin 3-(4''-O-methyl) gallate R<sub>4</sub>=OCH<sub>3</sub>, R<sub>1</sub>=R<sub>2</sub>=R<sub>3</sub>=OH



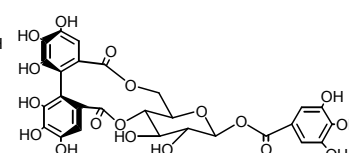
(-)-Catechin R<sub>1</sub>=R<sub>2</sub>=H  
 (-)-Gallocatechin R<sub>1</sub>=OH, R<sub>2</sub>=H  
 (-)-Catechin gallate R<sub>1</sub>=H, R<sub>2</sub>=Galloyl  
 (-)-Gallocatechin gallate R<sub>1</sub>=OH, R<sub>2</sub>=Galloyl



(+)-Catechin hydrate



(+)-Epicatechin



Strictinin